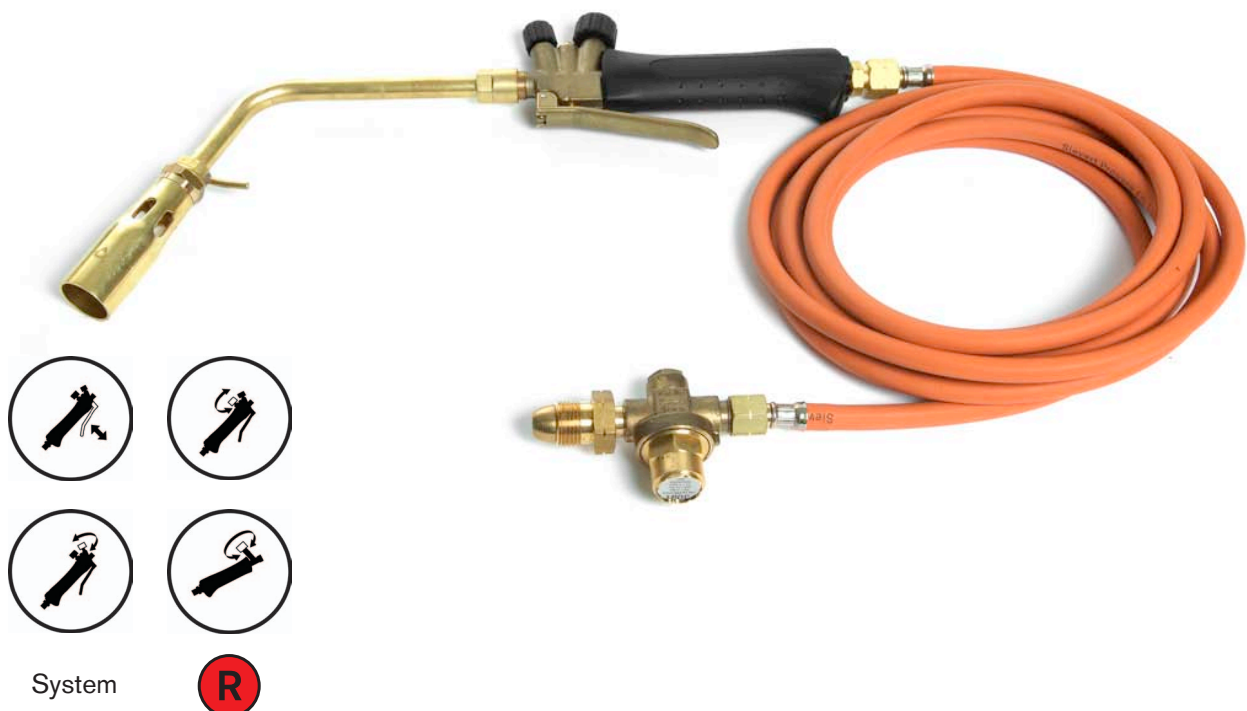


# Pro 88/86

## The classic torch system

- All components are carefully chosen to guarantee long service life
- Ergonomic designed handles
- Works in all weather conditions
- Wide range of burners for all applications
- Pro 88 a double valved handle mainly for larger burners
- Pro 88 incorporates one main valve and one economiser valve enabling a gas saving pilot flame
- Pro 88 with trigger for shifting between pilot and main flame and for pulsing the main flame
- Pro 86 a single valved handle mainly for smaller burners
- Pro 86 with valve and spindle designed for very exact flame setting



System





The Pro series meets high criteria for carrying out professional heating tasks. Whether soldering, paint stripping, cabling, roofing or gold/silversmith's work, the high quality combined with convenience and a comprehensive range of accessories makes the Pro series a versatile tool for the demanding craftsman.

Pro 88/86 - Sievert's classic torch system program operates with propane, butane and Mapp® gases.

## Sievert Pro 88 handle 3488

- Double valved handle mainly for larger burners
- Incorporates one main valve and one economizer valve enabling a gas saving pilot flame
- Trigger for instant shifting between pilot and main flame and for pulsing the main flame
- All metal parts made of high quality brass
- Ergonomic designed plastic composite handle
- Delivered without hose nipple
- Hose connection BSP 3/8"LH (348841), M14x1 (348842) or UNF 9/16"LH (348847)



Handle no.	3488XX
Working pressure, bar	1,5-8
Weight, g	385
Length, mm	205
Height, mm	90

## Sievert Pro 86 handle 3486

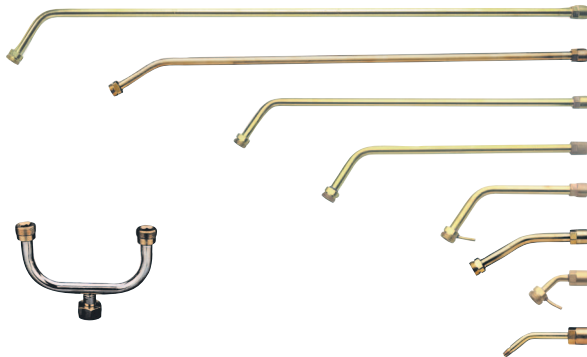
- Single valved handle mainly for smaller burners
- The spindle and valve are designed to give a very exact and quick flame setting
- The springloaded metal knob gives a precise and stable setting for the finest of flames
- All metal parts made of high quality brass
- Ergonomic designed plastic composite handle
- Delivered without hose nipple
- Hose connection BSP 3/8"LH (348641), M14x1 (348642) or UNF 9/16"LH (348647)



Handle no.	3486XX
Working pressure, bar	1,5-8
Weight, g	245
Length, mm	180
Height, mm	70

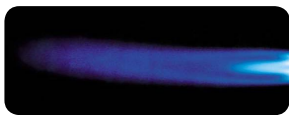
## Sievert Pro neck tubes

**System** R ▪ Wide range of neck tubes made of high quality brass ▪ Double neck tube 770044, made of stainless steel, makes it possible to connect two burners to one neck tube ▪ Shorter neck tubes like 3505, 3509 and 3511 are recommended for smaller heating applications like gold and silver forging ▪ Longer neck tubes like 3506, 3507, 3508 and 3510 are recommended for larger jobs like roofing and road works



Neck tube no.	Length, mm
350601	750
350801	600
350701	500
351001	350
350902 with hook	180
350501	100
351102 with hook	70
350101 only for burner 8842	78
770044 double neck tube	

## Sievert Pro 86 torch kit



**System** R ▪ A professional and powerful torch kit, ideal for soft soldering, brazing, melting, metal-works, paintstripping and other heating jobs ▪ Includes handle 3486, necktube 3511, burner 2941 and 2 m fixed hose ▪ Available with valve 700001 for connection to Sievert gas cylinder (219741) or BSP 3/8"LH (219742)



Torch kit no.	2197XX
Burner diameter Ø, mm	28
Gas Consumption, g/h at 2 bar	600
Effect, kW	7,7
Soft soldering about 400°C max. pipe diameter Ø, mm	60

## Burners for paint stripping



**System** R ▪ Flat, wide, extremely windproof and powerful flame for paint stripping ▪ For direct connection to Sievert Pro handles ▪ Recommended working pressure 2 bar



Flat flame burner no.	351703
Burner diameter, mm	35x5
Gas Consumption, g/h at 2 bar	210
Effect, kW	2,7

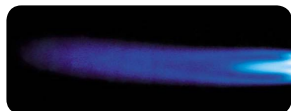
## Burners for soft soldering and brazing



- System**  Pin-point burners with the finest flames for precision work such as gold and silver forging ▪ Silver soldering about 615°C ▪ For connection to Sievert Pro necktubes, 8842 only for necktube 3501 ▪ Recommended working pressure 2 bar



Pin-point burner no.	884204	393802	393902
Burner diameter Ø, mm	8	17	17
Gas Consumption, g/h at 2 bar	20	20	70
Effect, kW	0,25	0,25	0,9
Soft Soldering about 400°C max. pipe diameter Ø, mm	10	10	12




- System**  Standard burners with brush-type flames for all kinds of soft soldering/small heating applications ▪ Silver soldering about 615°C ▪ For connection to Sievert Pro necktubes ▪ Recommended working pressure 2 bar



Standard burner no.	394002	394102	294102
Burner diameter Ø, mm	17	22	28
Gas Consumption, g/h at 2 bar	90	240	600
Effect, kW	1,2	3,1	7,7
Soft Soldering about 400°C max. pipe diameter Ø, mm	12	40	60



- System**  Cyclone flame burners are the most efficient burners for brazing and soft soldering ▪ The rotating flame gives an even and all round heat transfer to the pipe ▪ For direct connection to Sievert Pro handles ▪ Working pressure 2 bar



Cyclone burner no.	352403	352503
Burner diameter Ø, mm	19	25
Gas Consumption, g/h at 2 bar	240	800
Effect, kW	3,1	10,3
Soft Soldering about 400°C max. pipe diameter Ø, mm	50	70
Brazing up to 720°C max. pipe diameter Ø, mm	18	32

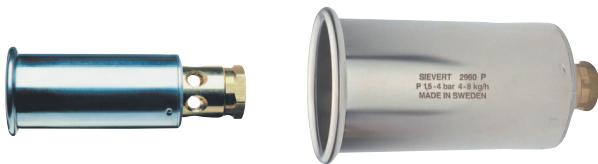
## Burners for roofing and other heat demanding works



**System** R ■ Heavy duty light weight power burners with extremely strong and windproof flames to withstand the severest weather conditions ■ Ideal for drying, bitumen laying, detail and field torching, preheating before welding, melting snow/ice and other heat demanding applications ■ For connection to Sievert Pro necktubes ■ Recommended working pressure 4 bar



Power burner no.	294202	294302	294402
Burner diameter Ø, mm	32	35	50
Gas Consumption, g/h at 4 bar	2 000	3 350	6 700
Effect, kW	26	43,5	86
Made of high quality brass			



Power burner no.	293401	296001
Burner diameter Ø, mm	34	60
Gas Consumption, g/h at 4 bar	2 000	8 250
Effect, kW	26	114
Made of high quality stainless steel		

## Ready made kits for roofing and other heat demanding works



Turboroofeer 50 no.	3444XX
Burner diameter Ø, mm	50
Gas Consumption, g/h at 4 bar	6 700
Effect, kW	86
Neck tube length, mm	180
Hose connection BSP 3/8"LH (344441), M14x1 (344442) or UNF 9/16"LH (344447)	



Turboroofeer 60 no.	3460XX
Burner diameter Ø, mm	60
Gas Consumption, g/h at 4 bar	8 250
Effect, kW	114
Neck tube length, mm	500
Hose connection BSP 3/8"LH (346041), M14x1 (346042) or UNF 9/16"LH (346047)	



Burner kit no.	345000
Burner diameter Ø, mm	50
Gas Consumption, g/h at 4 bar	6 700
Effect, kW	86
Swivel hose nipple for 5 to 8 mm hose	



Burner kit no.	625000
Burner diameter Ø, mm	56
Gas Consumption, g/h at 4 bar	4 800
Effect, kW	57
Neck tube length, mm	400
Hose nipple for 5 to 8 mm hose	

## A complete range of light weight roofing burners made of Titanium!



System

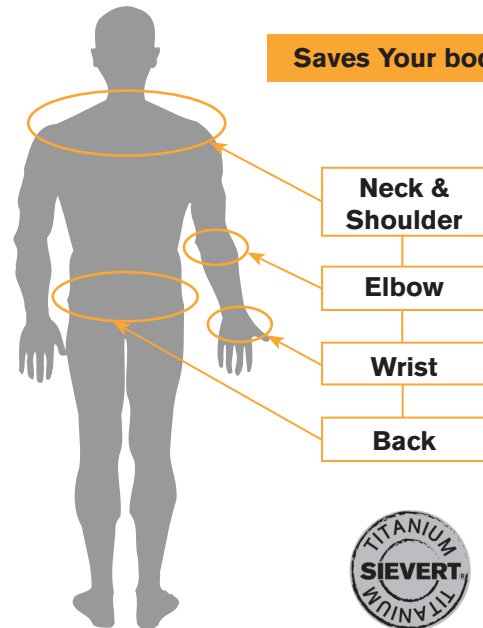


Working long days in tough conditions require tools that are easy to handle and prevent state of exhaustion. Sievert Titanium torches are the most ergonomic roofing burners ever created.

The weight has been reduced with 60% compared to traditional roofing burners on the market. This will dramatically reduce the load on your body when working continuously for hours, days and months.

Save Your body, buy the new Titanium roofing burners today!

**Saves Your body!**



Titanium kit no. **346051/57**

Complete torch kit including Pro 88 handle, 500 mm neck tube and 60 mm power burner made of Titanium and neck tube support. For technical data see art no. 3560-01. 346051 delivered with swivel hose nipple BSP 3/8"LH. 346057 UNF 9/16"LH.



Titanium kit no. **346052**

Complete torch kit including Pro 88 handle, 500 mm neck tube and 50 mm power burner made of Titanium, neck tube support and swivel hose nipple BSP 3/8"LH. For technical data see art no. 3565-01.

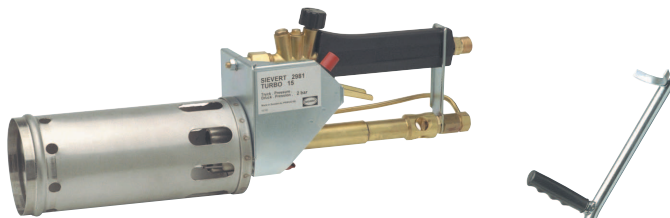


Titanium kit no.	295001	356001	356101	356201	356301	356401	356501	356601	356701
Burner width, mm	60	60	50	50	34	50	50	50	60
Gas consumption, g/h at 4 bar	6 700	8 250	6 700	6 700	2 000	6 700	6 700	6 700	8 250
Effect, kW	86	114	86	86	26	86	86	86	114
Neck tube length, mm	-	500	350	750	100	100	500	600	350

## Hot-air burners for roofing work



**System** R ▪ Powerful hot-air roofing burners with totally encased flames for efficient bitumen laying when open flames are not permitted ▪ Powerful enough to achieve the same speed of roof laying compared to open flames - and the gas consumption is much lower ▪ The use of heat is very efficient due to the narrow and directed hot-air stream and due to the fact that one can work even closer to the material ▪ All burners can use compressed air to increase power for welding and for quick and efficient drying ▪ Working pressure 2 and 4 bar



Detail burner no.	2981XX
-------------------	--------

Burner width, cm	8
Gas Consumption, kg/h at 2 bar	1,1
4 bar with compressed air	1,8
Effect at 2 bar, kW	15
Effect at 4 bar, kW	25

With automatic ignition, supplied with 3488 handle, hose connection BSP 3/8"LH (298101) or UNF 9/16"LH (298147).



Overlap burner no.	298201
--------------------	--------

Burner width, cm	22
Gas Consumption, kg/h at 2 bar	2,2
4 bar with compressed air	3,6
Effect, kW at 2 bar	30
Effect, kW at 4 bar	50

Delivered fully prepared for compressed air.



Overlap burner no.	2986XX
--------------------	--------

Burner width, cm	16
Gas Consumption, kg/h at 2 bar	1,1
4 bar with compressed air	1,8
Effect, kW at 2 bar	15
Effect, kW at 4 bar	25

With lifting device for the bitumen felt. Hot-air directed obliquely under overlap. Supplied with 3488 handle, hose connection BSP 3/8"LH (298601) or UNF 9/16"LH (298647).



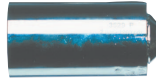
Turboset no.	717271
--------------	--------

Allows the use of compressed air to increase the power of hot-air burners 2981 and 2986.

## Burners for cable work - heat shrinking



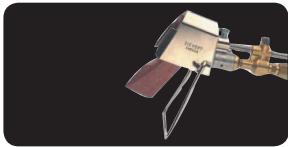
**System** ▪ Soft flame design ideal for cable work and other heat shrinking applications ▪ Soft flame burners with sweeping, powerful yellow and blue soot-free windproof flames ▪ Fresh air sucks in and keeps the burner head cold to minimize the risk of burning the shrink material ▪ To heat the sleeves efficiently but still soft enough not to overheat the cable handles ▪ Working pressure 2 bar



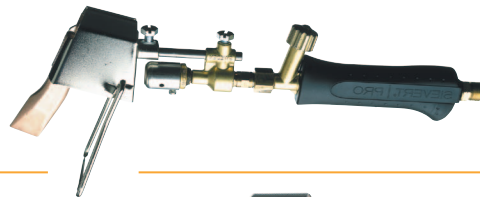
burner no.	352890
diameter Ø, mm	28
consumption, g/h at 2 bar	900
W	11,3

burner no.	352990
burner diameter Ø, mm	38
Gas Consumption, g/h at 2 bar	1 200
Effect, kW	15

## Burners for sheet metal work

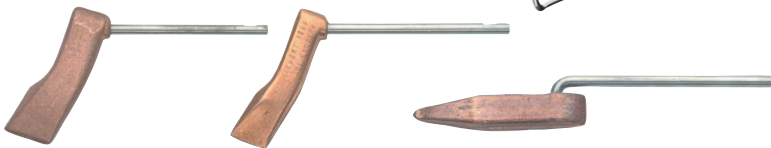


**System** ▪ Soldering iron burner for sheet metal work ▪ Practical and sturdy design ▪ Supplied with windshield and burner designed to give excellent wind protection ▪ Copper bits also for Pro 95 ▪ Working pressure 2 bar ▪ Hose connections BSP 3/8"LH (349241), M14x1 (349242) ▪ Delivered without copper bit

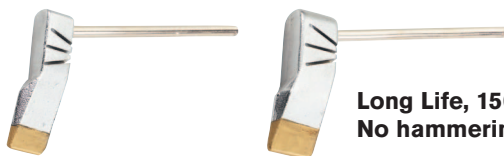


Soldering iron no.	3492XX
Gas Consumption, g/h at 2 bar	260
Effect, kW	3,3

Soldering burner no.	295501
Gas Consumption, g/h at 2 bar	260
Effect, kW	3,3
Wind shield no.	708121



Copper bit no.	701630	701720	702070
Weight, g	300	500	380



**Long Life, 1500 meters of soldering, No hammering, No filing!**

Copper bit no.	701633	701725
Weight, g	300	500



Copper bit no.	701800	256200
Weight, g	800	800